

1.Fill in the blanks

Trees, Trees, Trees

Trees, trees,

have and and

Trees, trees, trees

have andand

a home for and bees

a home for of flying birds

a home for bees and brown bats

home for squirrels, bugs and

[snakes roots ,buds ,trunks ,seeds ,birds ,nest ,leaves ,fruits , trees]

2.Label the pictures



1



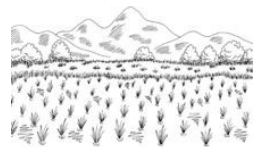
2



3



4



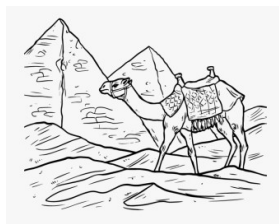
5



6



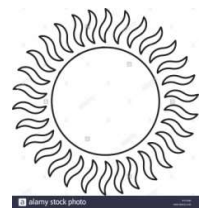
7



8



9



10

1).....

2).....

3).....

4).....

5).....

6).....

7).....

8).....

9).....

10).....

3. Read and order.

- a) Water the seeds. []
- b) Take a pot. Fill it with soil and compost.[]
- c) Place the pot in a warm place. []
- d) Wait for five or six days. Notice the buds.[]
- e)Sprinkle the seeds. Cover them with soil.[]

4. Guess and find

- 1.It has long ears.It likes to eat carrots.
- 2.It has wings.It can fly.It has a beak.
- 3.It lives in a web.It eats insects.
- 4.It has a green body.It jumps high up.It lives in a pond.
- 5.It has three lines on its back.It comes to eat fruit in our garden.
- 6.It collects nectar from flowers.It lives in a hive.
- 7.It is an insect.It is small and green .It has two antennae.
- 8.It has no legs.It lives in the soil.
- 9.It walks slowly.It has a house on it.
- 10.It is a very big animal.It has big ears.It eats sugar cane.

[squirrel ,elephant ,bee,grasshopper ,frog ,snail,rabbit ,spider,bird,worm]

PLANT PART DIAGRAM



Leaf: turns sunlight into food for the plant
Flower: attracts birds and insects to spread pollen and make seeds
Fruit: stores and protects the seeds
Stem: carries water and nutrients through the plant and provides structure
Seed: grows into a new plant
Root: takes water and nutrients from the soil, stores food and anchors plant in the ground

6.What are the uses of trees.

- 1.Trees give us all kinds of
- 2.Trees give wood for
- 3.Trees give rubber for
- 4.Trees clean up the
- 5.Trees are home for

- | |
|--------|
| birds |
| boots |
| air |
| chairs |
| fruits |

7.Name 5 animals that come to your garden

- 1)..... 2)..... 3).....
- 4)..... 5)

8.Underline the correct answer.

- 1.Who looked after the sheep? [a man / a shepherd / villagers]
- 2.Where did the boy take his sheep? [to the desert /to the village /to the forest]
- 3.What did he play ?[a trick / a game /a toy]
- 4.What did really come one day ? [adog / alion /a fox]
- 5.Did the villagers come to help the boy? [no / yes /not given]

9. short vowel

long vowel

- 1.fit
- 2.ship
- 3.hit
- 4.lip
- 5.tin

- | |
|-------|
| teen |
| leap |
| sheep |
| heat |
| feet |

10.My friend

.....

.....

.....

.....

.....

.....

